

COSTER



At Coster we manufacture a comprehensive range of pre configured modular controllers which are both easy to install and simple to programme by use of 4 operating keys and an alphanumeric display. When connected to a desk top PC running our FREE ISSUE Coster SWC701 software they can also provide all the benefits of a remotely controlled building management system.

AUTOMATION BOILER & BURNERS

1

Efficient modular controllers designed for boiler and burner control.

- Temperature control and sequencing of up to 24 boilers.
- Stand alone control or linked to Coster's FOC Telemanagement software via our C-Bus protocol.
- Sensor information exchange between controllers via our C-Ring Protocol.
- Easy connection to slave controllers to build up a complete control system.



HEATING

2

A comprehensive range of primary, zone, and district heating modular controllers.

- A complete range of both Coster Telemanagement ready and stand alone controllers.
- Compensating and self learning optimising controllers for use with single and multiple heating zones.
- Digital input alarms that are easily managed via our FOC Telemanagement software either locally or remotely via our C-Bus protocol.



THERMOSTATIC MIXING VALVES

3

A full range of thermostatically controlled Hot Water valves.

- 15mm up to 50mm pipe sizes available.
- Self contained electronic temperature control with user definable set point between 30-70°C.
- Automatic Anti-Legionella thermal shock function to ensure sterilisation of the secondary Hot Water system without the need for chemical dosing.
- Digital outputs for common fault and Anti-Legionella function that can be linked into a BMS.



CONTROLLERS & INSTRUMENTS FOR VARIOUS USES

4

A selection of miscellaneous controllers.

- Data loggers for temperatures, 0-10 volt, active signals, status etc.
- Convertors to change 3 wire (power to open, power to close) signals to either 0-10 volt or 4-20 mA.
- Automatic pump changeovers.
- Step and sequence controllers.
- Electronic thermostats with high/low alarms.
- Zone temperature and time controllers.
- Solar panel controllers.
- Swimming Pool Controllers.
- Convertor cables to change from switched live signals to digital signals.

AIR CONDITIONING

5

Modular controllers for full control of Air Handling Units and Ventilation systems.

- Control of heating and / or cooling batteries, either single or multiple.
- Control of air dampers in AHU or ventilation systems.
- Damper actuators and mechanical frost protection thermostats.
- Differential air pressure switches.

GAS SAFETY

6

A complete gas safety system from Coster.

- Gas safety valves, from 15mm up to 100mm in stock, auto and manual reset versions.
- 12, 24 or 230 volt versions.
- Zoned gas detection from 1 to 12 zones.
- Any number of zones can be covered by our modular system.
- A range of both domestic and industrial type sensors.
- Detection of CO, LPG and NG as stock items but other gases can be supplied.
- Connection to any BMS system via voltage free relays for alarm active functions.
- Calibration service available upon request.
- A range of accessories such as beacons, emergency knock off buttons and thermal links.

ENERGY METERING ALLOCATION OF CHARGES

7

A range of metering equipment for measuring energy consumption.

- Measurement of heating, cooling, hot water, cold water, electricity, gas and run hours.
- Compliance with EN 1434 standard.
- Data readouts can be obtained either locally or remoteley via Coster SWC 701 software.
- Capacity to record and log consumption data over a 52 week period.
- A range of pulsed output water flow meters from 15mm - 200mm.



VALVES ACTUATORS

8

Valves and actuators for all types of HVAC solutions.

- Slipper valves for mixing valves in heating systems.
- Ball valves for complete shut of in hot water systems.
- Linear valves for AHU and chilled water systems.
- 2, 3 and 4 port valves for fan coils units.
- Electrically operated radiator valves.
- Operating temperatures available from -15 up to 200°C.
- Actuator run times from 30 to 630 seconds.
- 12, 24 or 230 volt versions in stock.



DETECTORS REMOTE CONTROLS MISCELLANEOUS ACCESSORIES

9

All the sensors and remote control options you need for the Coster controllers.

- Outside air sensors for wall or duct mounting.
- Room sensors for wall or duct mounting.
- Water flow sensors for immersion or clamp on.
- Remote control units for a wide variety of the Coster controllers to adjust temperatures, programmes etc.
- Humidity sensors for room or duct mounting.
- Level indicators.
- Water loss detectors for sensitive areas or plant rooms.



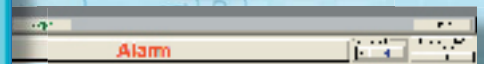
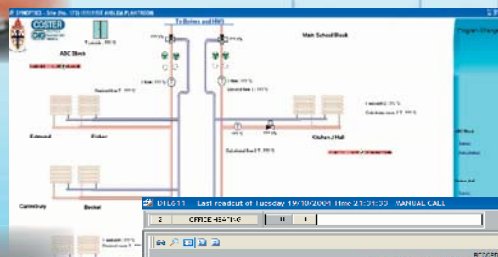
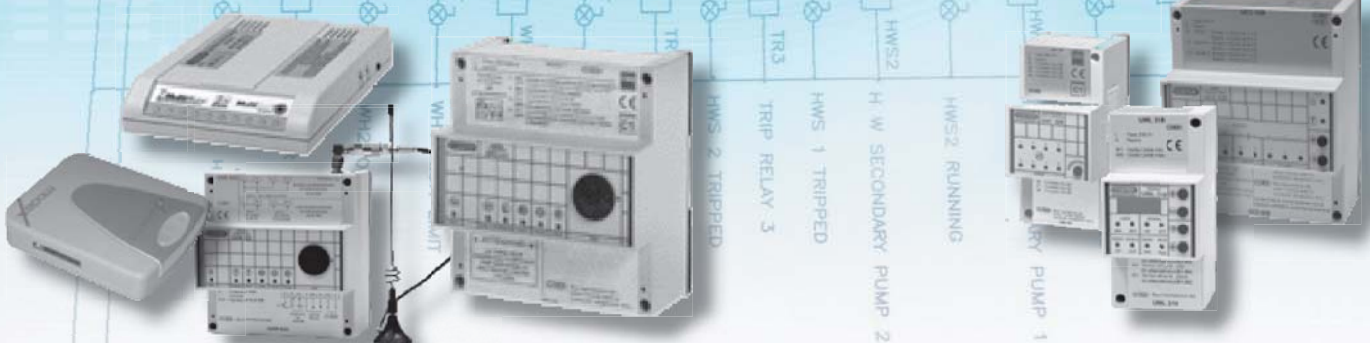
CONT ON
SPT 2

TELEMANAGEMENT SYSTEM "TELECOSTER" INSTALLATIONS

10

All you will need to manage a site either locally or remotely at a fraction of the cost of a traditional Building Management System (BMS).

- FOC Coster SWC 701 Telemanagement software with inbuilt graphics for easy end user interfacing.
- A range of pre configured modems - desk top, USB and panel mounted versions.
- Communications via Internet (with local SWC web server), Intranet, landline or GSM.
- Full controls strategy and graphics service available from Coster.
- Alarm management with forwarding via voice message, SMS text message, E-mail or third party programs.
- Data management direct from SWC 701 software or by exporting in standard formats to other programs such as Windows™, Excel™ or Word™.
- A range of data logging controllers to record such values as temperatures, digital signals, 0-10 volt, 4-20mA etc.
- All the cables and converters required to allow seamless communications.





Coster was established in Italy in 1967 by a team of engineers who had worked for many years in the field of electronic instrumentation for use in both terrestrial sites and on board satellites and missiles. This highly specialised knowledge was applied to developing a new range of high quality products for the temperature and humidity controls market. To this day, Coster TE Spa is still a privately owned, family run business.

Our manufacture, research and development and quality control are centred on our production plant in Edolo, Northern Italy. Our sales network of over 30 agencies covering Italy, UK, Russia and mainland Europe are controlled from our headquarters in Milan together with technical support.



Our mission statement is to provide safety and energy efficient control and metering, through equipment which has been designed and manufactured to the highest standards.

We back this statement by offering a 3 year guarantee on all of our manufactured products.



In 1993 Coster were one of the first companies in Italy to gain ISO 9002, and then in July 2003 we achieved ISO 9001:2000 certification.

Head Office

Coster TE Spa
Via San G.B. De La Salle, 4/A - 20132 Milano

Tel: +39 022722121.
Fax: +39 022593645.
E-mail: info@coster.eu

Coster TE UK Branch

5 Shaftesbury Street South
Sir Francis Ley Industrial Park
Derby. DE23 8YH

Tel: +44 (0)1332 200555.
Fax: +44 (0)1332 204181.
E-mail: ukbranch@coster.info

Coster TE Rome Branch

Via S. Longanesi, 14 - 00146 Roma

Tel: +39 065573330.
Fax: +39 065566517

Manufacturing Plant

Via Gen. Treboldi, 190/192 - 25048 Edolo (BS)

Tel: +39 0364773202

For latest information please visit our web site

www.coster.info